

PNA COVID-19 Purse Seine Dashboard

October 2022

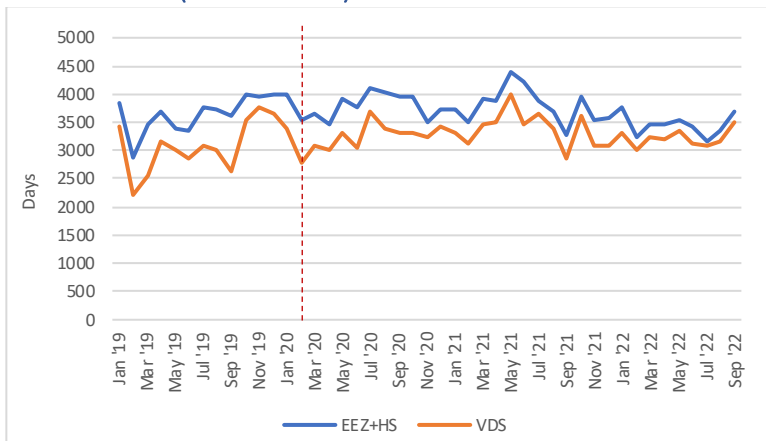


Key trends:

- Preliminary figures indicate that overall purse seine fishing effort rose in September, with fishing intensity (fishing days/calendar day) increasing to the highest level in 2022. Note that September figures may be adjusted as NFDs are processed.
- Total purse seine catch (EEZs+HS) rose slightly in September, up by around 13% on the August total. Catch and effort remained concentrated in the west, with around 60% of total catch in FSM. Preliminary data indicates that effort is high in PNG in October.
- Based on preliminary figures, overall catch rates remained stable in September. Highest catch rates were in FSM, NR and the HS.
- Reported transshipment volumes fell by around 12% on August volumes, with reported volumes highest in FSM. Note that transshipment volumes are not available for all vessels.
- Bangkok SKJ prices averaged \$1600 in September, down from \$1800 in August, according to Thai Union figures. Singapore MGO price continued to fall, averaging \$981/mt in September, down from \$1,048/mt in August. The differential between BKK SKJ price and Singapore MGO price fell slightly, sitting below the 10-year average.
- Amongst PNA Parties, all countries have now experienced major COVID community transmission events at some stage during the pandemic, with the exception of Tuvalu (and Tokelau). Short, sharp waves of cases experienced by several PNA Parties in recent months have now subsided, with the exception of FSM which experienced its largest wave of new cases during the pandemic in early Oct. Amongst key SE Asian processing countries, case numbers are low levels relative to population size.

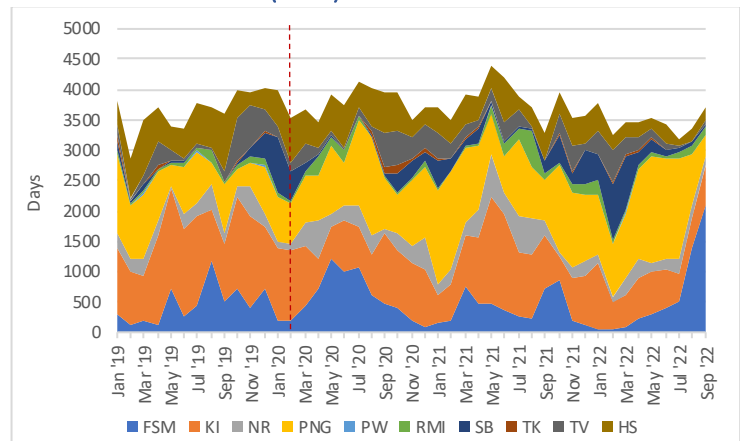
Fishing effort

Overall effort (PNA EEZs+HS)



- Overall fishing effort (EEZ+HS) rose in Sept, up around 10% on Aug. Fishing intensity (fishing days/calendar day) also rose to the highest levels for 2022. VDS usage was well above average for Sept during the 2015-21 period.

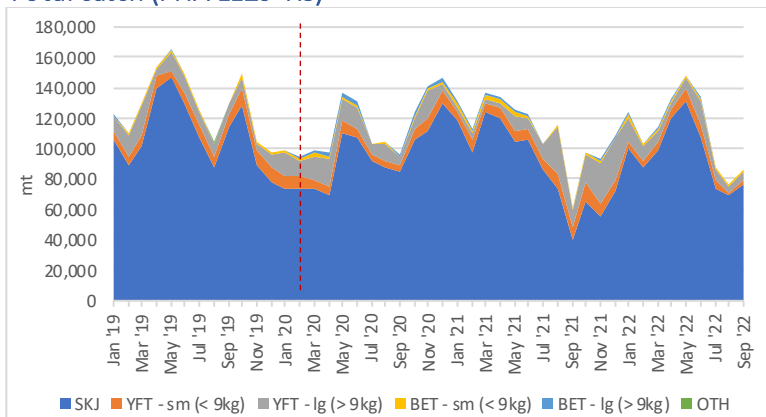
Distribution of effort (EEZs)



- Effort was highest in FSM, accounting for close to 60% of overall effort. Effort rose in FSM and KI, and fell in PNG. PNG's effort was the lowest since Oct '19, although preliminary figures indicate high levels of effort in PNG in Oct.

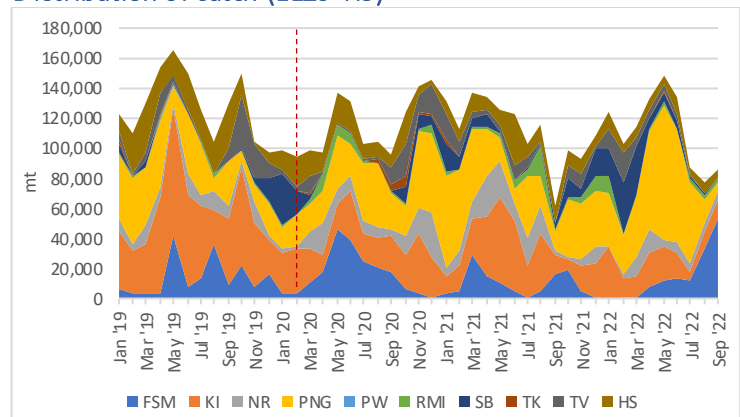
Catch

Total catch (PNA EEZs+HS)



- Total catch (EEZ+HS) rose slightly in Sept, up by 13% on the Aug total (86,471t vs 76,797t). The catch was well below average for the 2019-21 period.

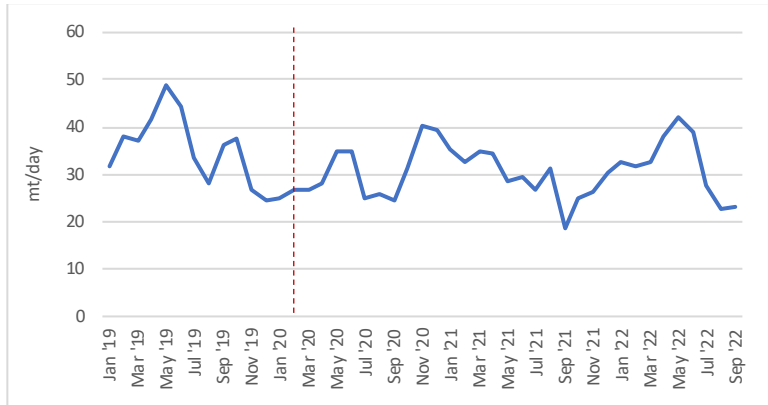
Distribution of catch (EEZs+HS)



- Catches broadly reflected effort, with FSM accounting for 61% of overall catch. Catches rose sharply in FSM, and less so in KI. Catches fell in PNG, NR and RMI.

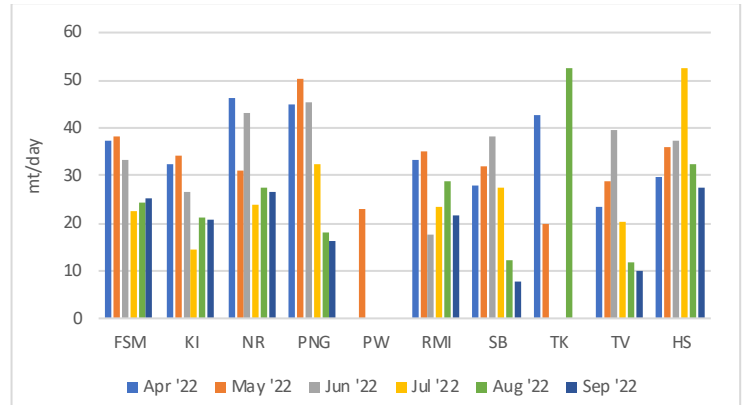
Catch rates

Overall (PNA EEZs+HS)



- Overall catch rates remained stable in Sept, continuing a general trend in recent years of lower catch rates during the FAD closure. The Sept catch rate was the third lowest in the 2019-22 timeseries. These figures are preliminary and may be adjusted slightly as NFDs are processed and additional e-reporting is received.

Catch rate by zone (EEZs)



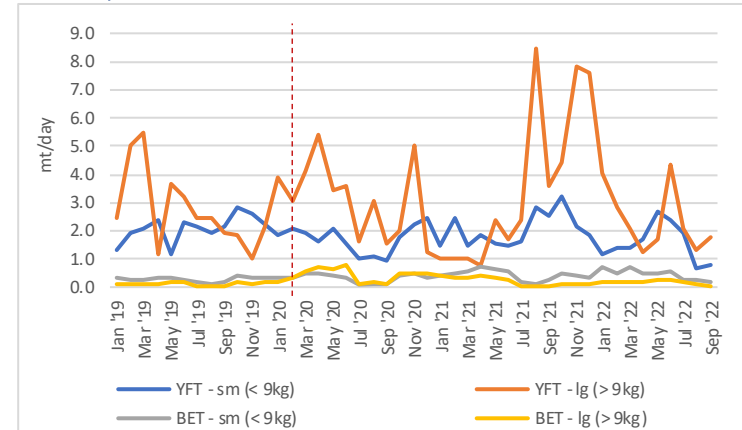
- Preliminary figures indicate that catch rates varied across the region, with rates highest in the HS, FSM and NR. Catch rates continued to fall in PNG, SB and TV.

Skipjack



- SKJ catch rate remained stable at relatively low levels in Sept. Monthly catch rates for Sept have varied considerably across the 2019-2022 period.

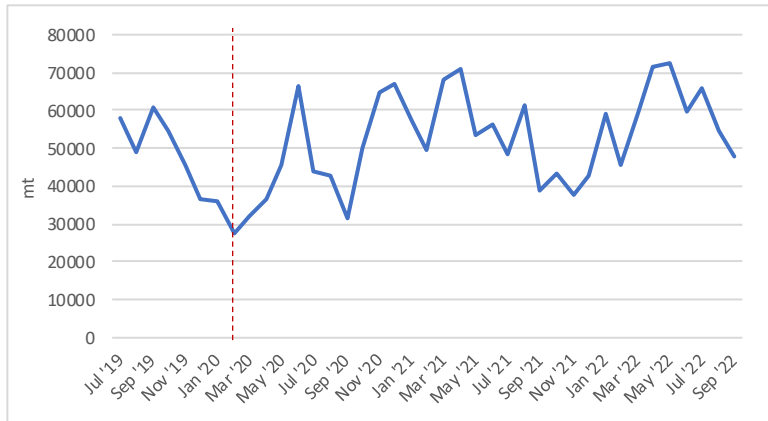
Other species



- Amongst the other purse seine species/size categories, catch rates rose slightly for large and small YFT, but continued at low levels for large and small BET.

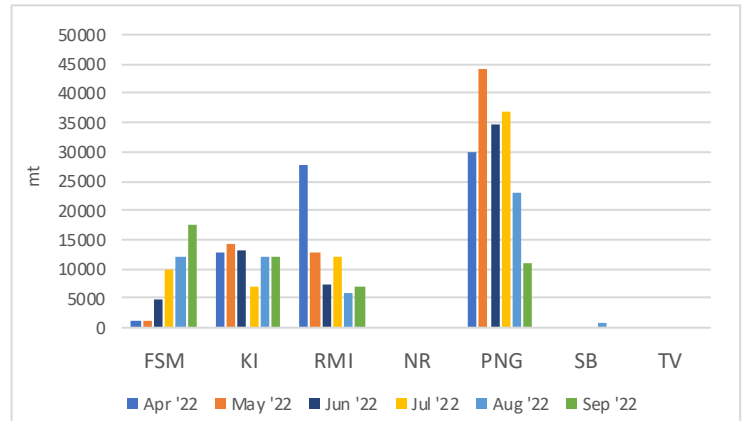
Reported Transhipment

Volume



- Reported transhipment volumes in PNA ports fell in Sept, down by around 12% on Aug volumes (from 54,390t to 47,600t). Note that transhipment volumes for some vessels are not available, so the figures reported here represent a sub-set of overall volumes.

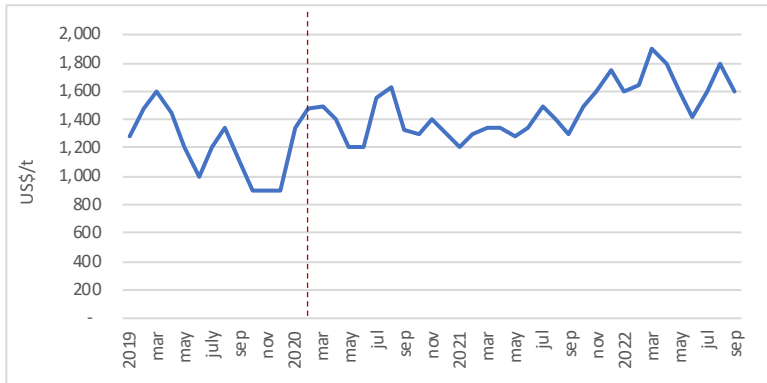
Location



- Reported transhipment volumes were relatively evenly spread in Sept, with highest volumes in FSM. Reported transhipments in PNG ports fell, while KI and RMI remained relatively stable.

Prices

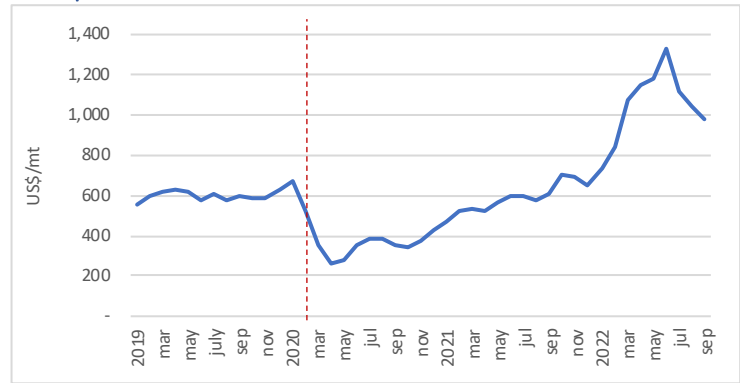
SKJ Price



https://investor.thaiunion.com/raw_material.html

- Thai Union report that Bangkok SKJ prices averaged around \$1600 in Sept, down from \$1800 in Aug. The Sept '22 price is the highest monthly Sept price since 2018.

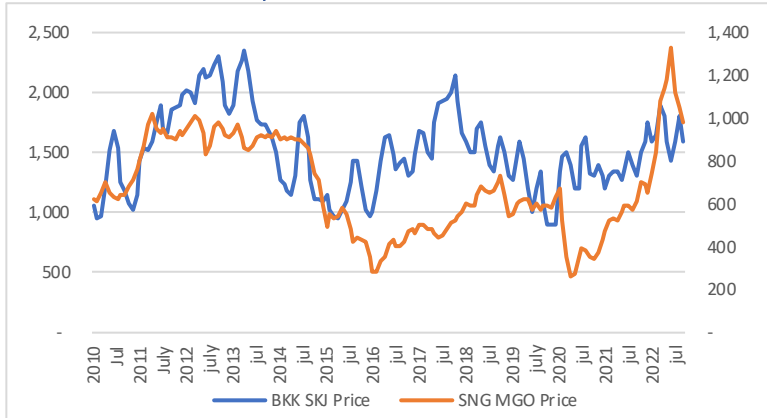
Fuel price



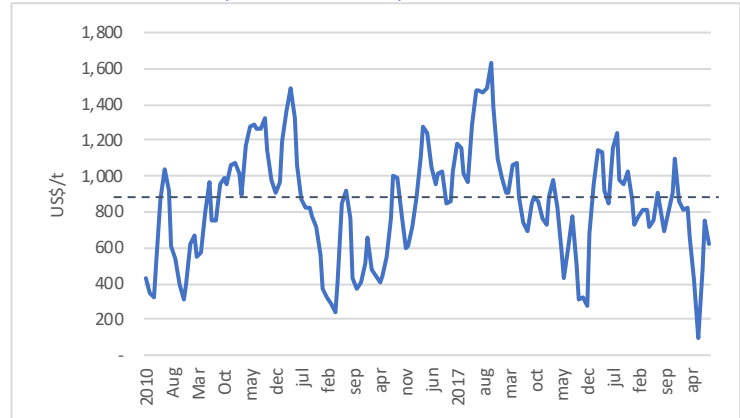
<https://shipandbunker.com/prices/apac/sea/sg-sin-singapore#MGO>

- Singapore MGO price continued to fall from its peak of around US\$1,330/mt in June. During Sept price averaged US\$981/mt, down from US\$1,049/mt in Aug. Price has risen slightly in Oct, sitting at US\$1,063/mt as at Oct 17th.

BKK SKJ Price vs Fuel price



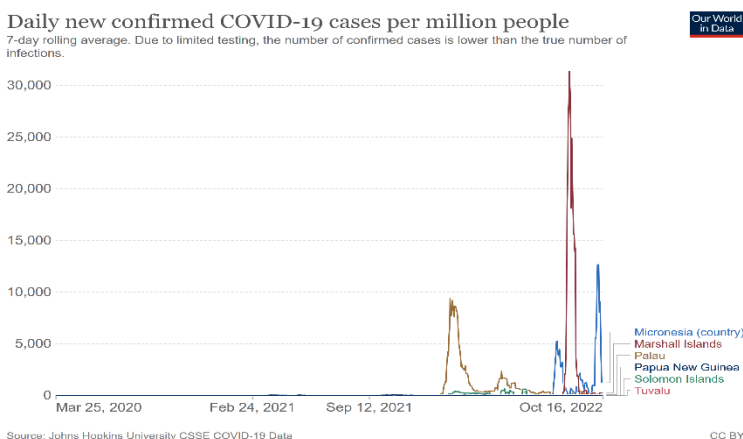
Price differential (BKK SKJ – Fuel)



- In Sept, the Singapore MGO price line and SKJ price diverged slightly with falls in both SKJ price and fuel price.
- The price differential between BKK SKJ price and Singapore MGO fell slightly in Sept to US\$620, down from US\$752 in Aug. The differential remains below the 10yr average of \$848.

COVID-19 cases

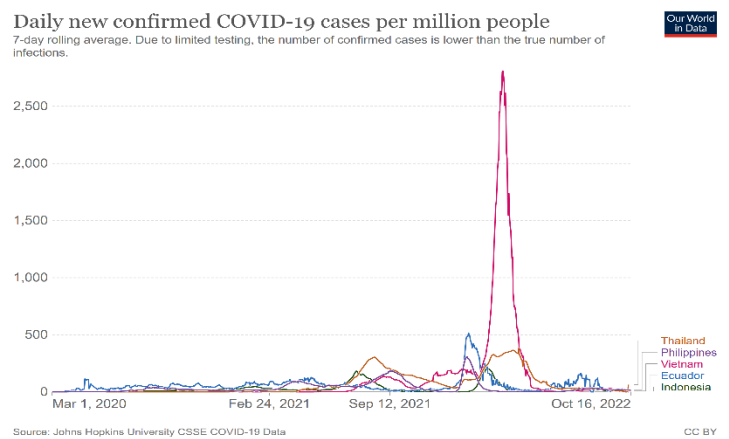
Daily confirmed cases – Pacific Island countries



<https://ourworldindata.org/covid-cases>

- Short, very sharp waves of community transmission in several PNA countries experienced between June and August appear to have receded, with the exception of FSM which experienced its largest wave of new cases during the pandemic in early Oct. New case numbers have since fallen rapidly.

Daily confirmed cases – Processing countries

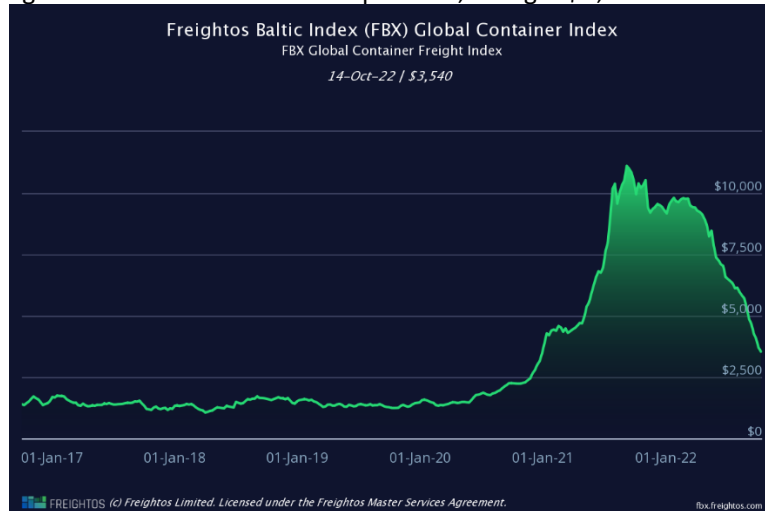


<https://ourworldindata.org/covid-cases>

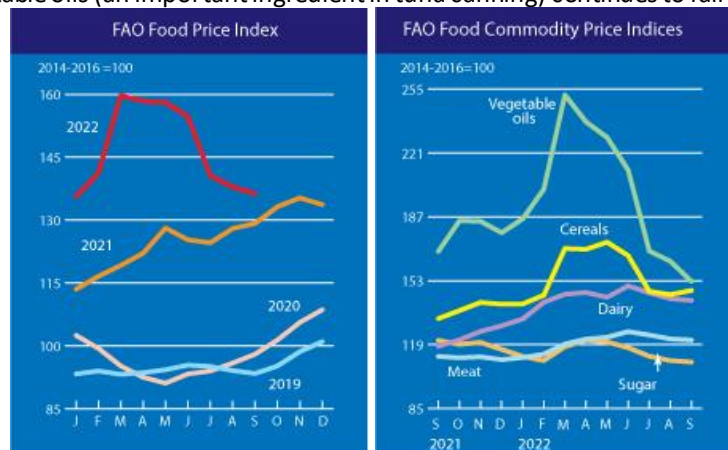
- New daily case numbers across all main processing countries are now at low levels relative to population size, although Thailand's numbers were beginning to rise in mid-Oct.

Other issues:

- Amongst the PNA Parties, all except Tuvalu (and Tokelau) have now experienced high levels of COVID community transmission at some point throughout the pandemic. While the major wave of cases experienced by many PNA Parties have now subsided to low levels, FSM experienced it’s biggest wave of the pandemic in early October, with most new cases in Chuuk¹.
- SPC report that rates of vaccination in the Pacific are generally very high, with each of NR, PW, TV and KI achieving >90% double dose vaccination rates amongst PNA Parties². Vaccination rates in PNG remain very low.
- The FBX global container freight index continued to fall in September, sitting at \$3,540 for a 40ft container as at 14th October³.



- The FAO Food Price Index fell for the sixth month in a row in Sept, down 1.1% on the August figure, but remains at historically high levels⁴. The price of vegetable oils (an important ingredient in tuna canning) continues to fall from a peak in early 2022.



- Atuna report that canners and end of chain buyers holding off orders, combined with sufficient supply, has placed downwards pressure on BKK SKJ prices in recent weeks⁵. The price is expected to further ease with the opening of the FAD closure.

Notes:

- Data on catch, effort, catch rates and transshipment is based on electronic reporting through iFIMS as at 18th October, 2022. Some data may change as more information is added over time. Figures for September 2022 should be considered preliminary.
- The EEZs+HS effort figures in the fishing effort graph do not include a VDS vessel size adjustment factor. The actual VDS usage figures are adjusted for vessel size. HS days may include some non-fishing time. HS effort figures are those for the eastern high seas and HSPs 4 and 5.
- A dashed-red line has been on many graphs at February 2020 to provide an indication of the time in which COVID-related restrictions were becoming more common globally and regionally.

¹ <https://gov.fm/index.php/component/content/article/35-pio-articles/news-and-updates/657-covid-19-booster-doses-no-longer-required-for-travel-into-the-fsm-all-fsm-states-fully-open-for-interstate-international-travel>
² <https://www.spc.int/updates/blog/2022/06/covid-19-pacific-community-updates#CurrentStatus>
³ <https://fbx.freightos.com/>
⁴ <https://www.fao.org/worldfoodsituation/foodpricesindex/en/>
⁵ <https://atuna.com/news/sustained-pressure-triggers-bangkok-skipjack-price-fall-rapidly>