

PNA COVID-19 Purse Seine Dashboard

November 2022

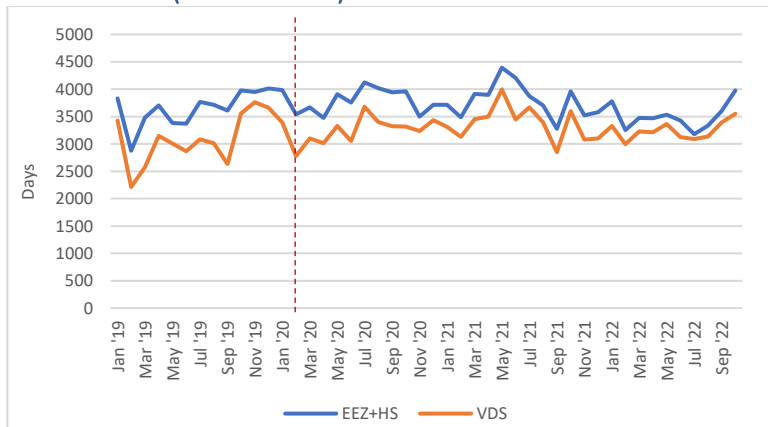


Key trends:

- Preliminary figures indicate that overall purse seine fishing effort rose in October, with fishing intensity (fishing days/calendar day) increasing to the highest level in 2022. Note that October figures may be adjusted as NFDs are processed.
- Total purse seine catch (EEZs+HS) rose sharply in October, up by around 40% on the September catch, coinciding with the end of the FAD closure. Catch and effort remained concentrated in the west, with PNG and FSM collectively accounting for around 60% of total effort. Preliminary data indicates that effort is high in PNG and FSM in November.
- Based on preliminary figures, overall catch rates rose in October, consistent with the end of the FAD closure. Highest catch rates were in PNG and the HS.
- Reported transshipment volumes rose by around 38% on September volumes, with reported volumes highest in PNG and RMI. Note that transshipment volumes are not available for all vessels.
- Bangkok SKJ prices averaged \$1,580 in October, down from \$1,600 in September, according to Thai Union figures. Singapore MGO price rose, averaging \$1,046/mt in October, up from \$981/mt in September. The differential between BKK SKJ price and Singapore MGO price fell, sitting below the 10-year average.
- Amongst PNA Parties, all countries (except Tokelau) have now experienced major COVID community transmission events at some stage during the pandemic. Tuvalu experienced its first wave of community transmission in November. Amongst key SE Asian processing countries, case numbers are low levels relative to population size.

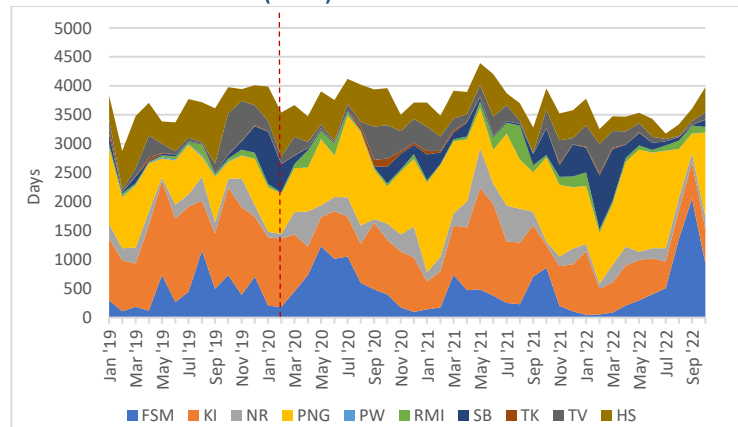
Fishing effort

Overall effort (PNA EEZs+HS)



- Overall fishing effort (EEZ+HS) rose in Oct, up around 10% on Sept. Fishing intensity (fishing days/calendar day) also rose to the highest levels for 2022. VDS usage was slightly above average for Oct during the 2015-21 period.

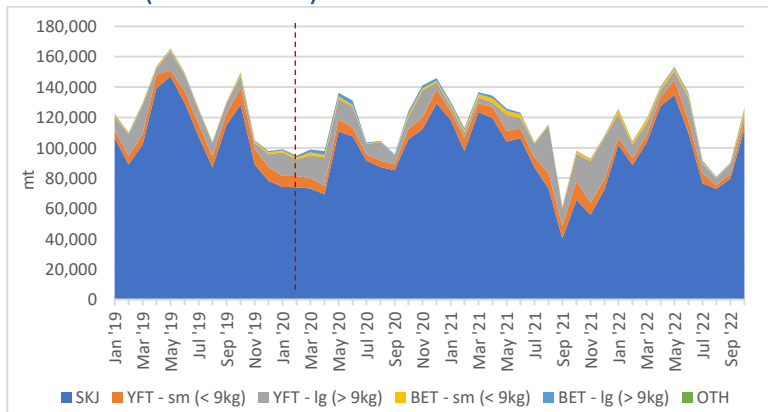
Distribution of effort (EEZs)



- Effort was highest in PNG and FSM, collectively accounting for around 60% of overall effort. Effort fell in FSM, and rose in PNG, SB, TV and the HS. Preliminary figures indicate high levels of effort in PNG and FSM in Nov.

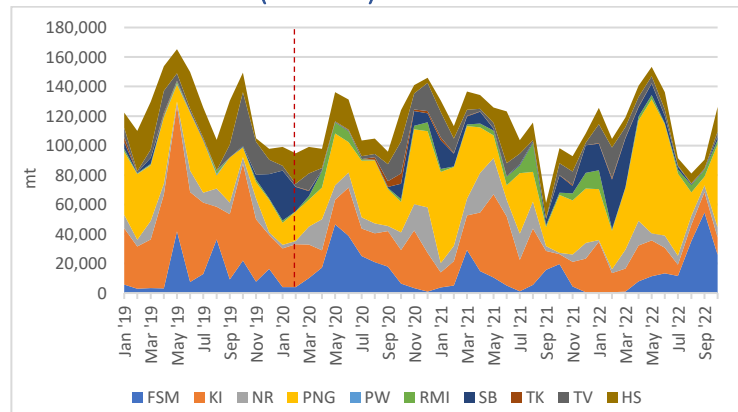
Catch

Total catch (PNA EEZs+HS)



- Total catch (EEZ+HS) rose sharply in Oct, up by 40% on the Sept total (126,207t vs 90,311t), coinciding with the end of the FAD closure. The catch was slightly above average for the 2019-21 period. Increased catch was largely driven by increased SKJ catch.

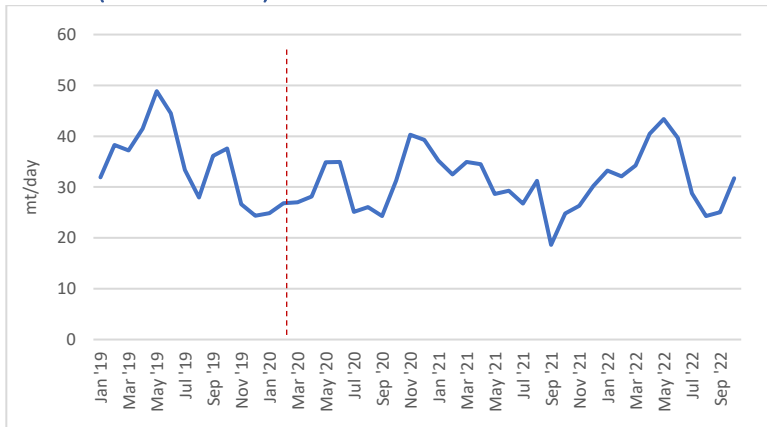
Distribution of catch (EEZs+HS)



- While catches remained concentrated in the west, the distribution amongst EEZs changed markedly from Sept. FSM's catch halved, while PNG's catch increased around 10-fold. Catches in the HS tripled, while catches in TV and SB also increased. Catches in KI remain relatively low.

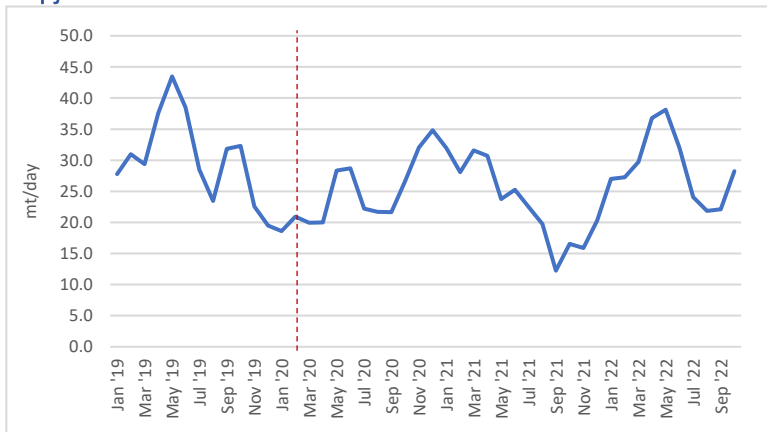
Catch rates

Overall (PNA EEZs+HS)



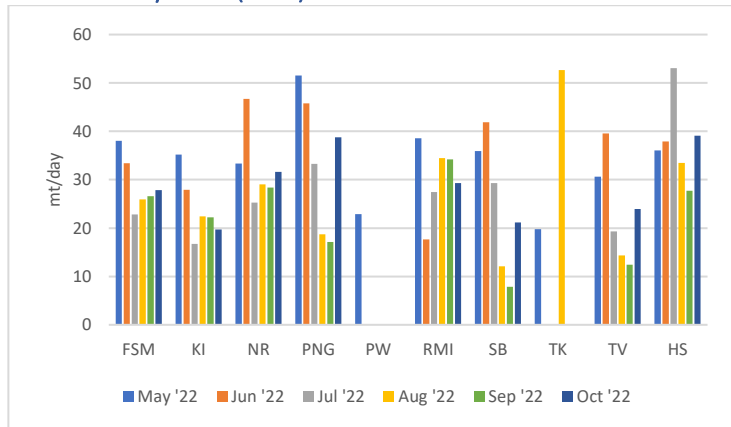
- Overall catch rates rose in Oct, coinciding with the end of the FAD closure. The Oct catch rate was higher than the Oct '21 catch rate, but lower than the Oct '19 catch rate. These figures are preliminary and may be adjusted slightly as NFDs are processed and additional e-reporting is received.

Skipjack



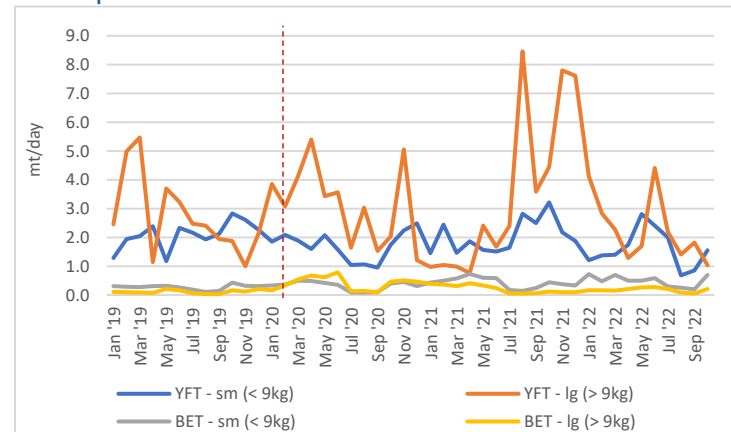
- SKJ catch rate rose by around 28% in Oct with the end of the FAD closure.

Catch rate by zone (EEZs)



- Preliminary figures indicate that catch rates varied across the region, with rates highest in PNG and the HS. Catch rates rose substantially in PNG, SB and TV, but remained relatively stable in FSM, KI, NR and RMI.

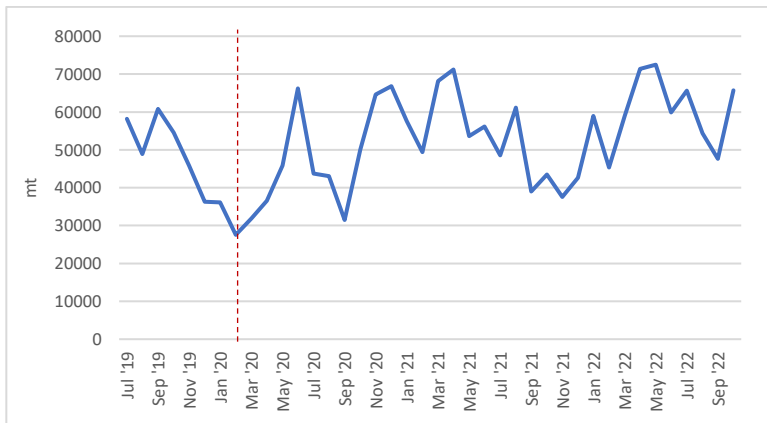
Other species



- Amongst the other purse seine species/size categories, catch rates rose for small YFT and BET, but remained at low levels for large YFT.

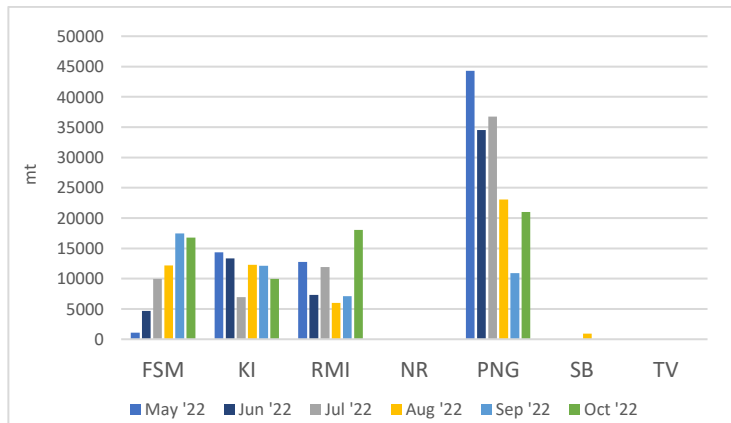
Reported Transhipment

Volume



- Reported transhipment volumes in PNA ports rose in Oct, up by around 38% on Sept volumes (from 47,600t to 65,696t). Note that transhipment volumes for some vessels are not available, so the figures reported here represent a sub-set of overall volumes.

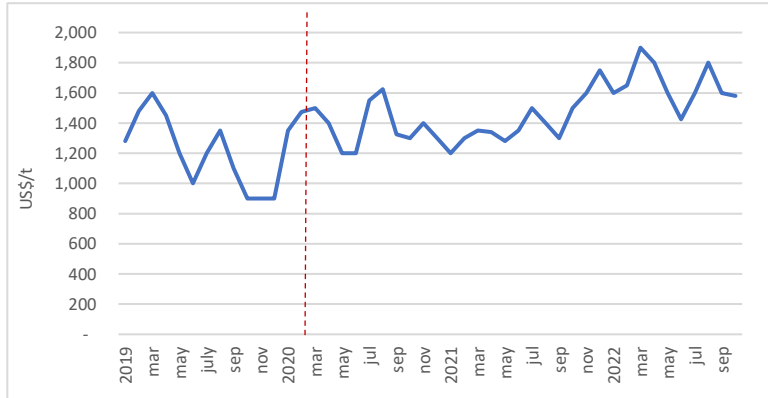
Location



- Reported transhipment volumes were highest in the west in Oct, with highest volumes in PNG, RMI and FSM. Reported transhipments in PNG and RMI rose, while FSM and KI remained relatively stable.

Prices

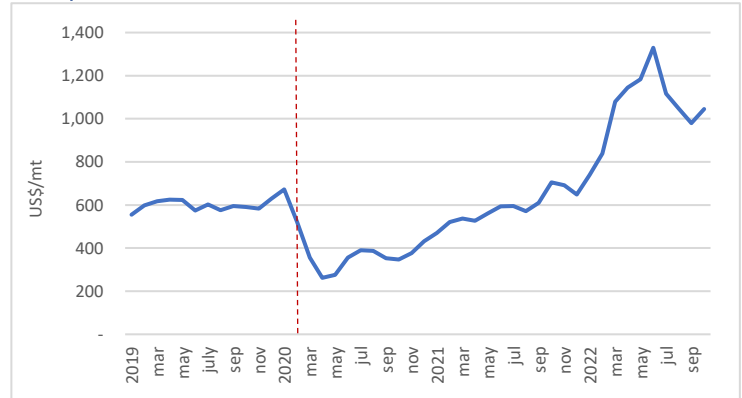
SKJ Price



https://investor.thaiunion.com/raw_material.html

- Thai Union report that Bangkok SKJ prices averaged around \$1580 in Oct, down slightly from \$1600 in Sept. The Oct '22 price is the highest monthly Oct price since 2017.

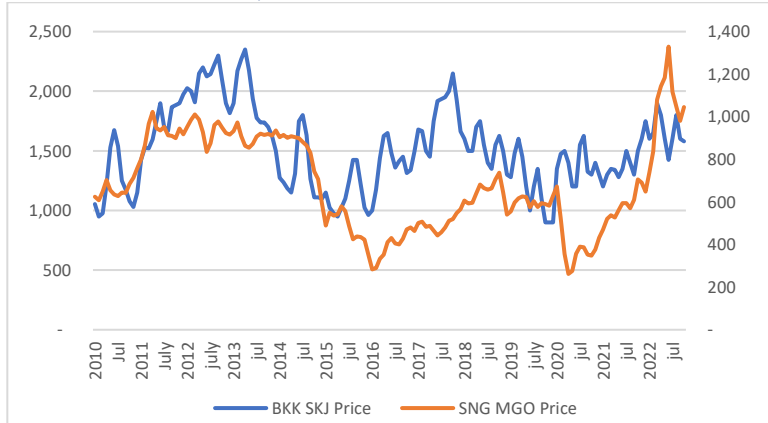
Fuel price



<https://shipandbunker.com/prices/apac/sea/sg-sin-singapore#MGO>

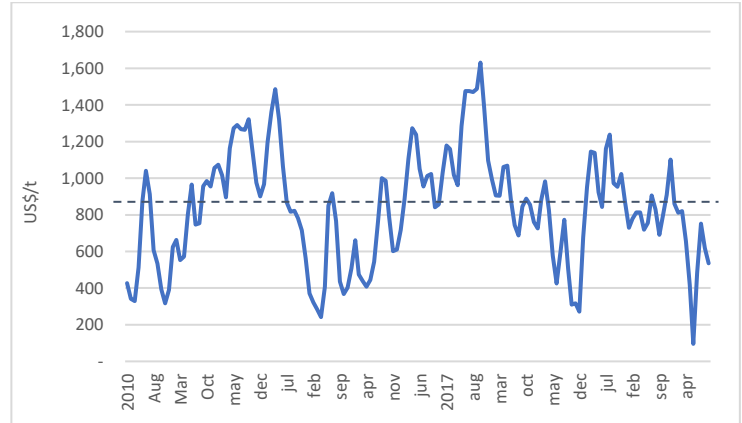
- Singapore MGO price rose slightly in Oct averaging US\$1,046/mt, up from US\$981/mt in Sept. Price has remained stable in Nov, sitting at US\$1,030/mt as at Nov 21st.

BKK SKJ Price vs Fuel price



- In Oct, the Singapore MGO price line and SKJ price diverged slightly with the fall in SKJ price and rise in fuel price.

Price differential (BKK SKJ – Fuel)

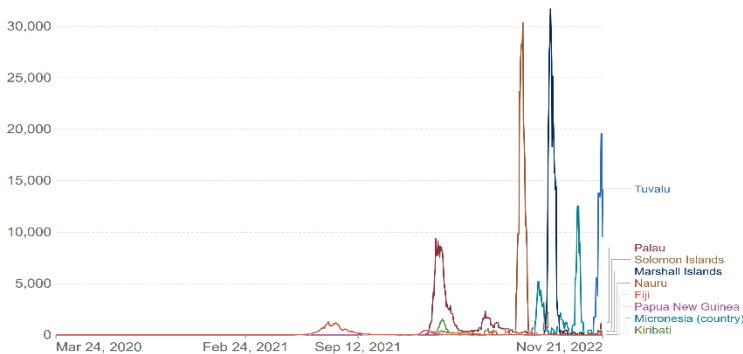


- The price differential between BKK SKJ price and Singapore MGO fell slightly in Oct to US\$535, down from US\$620 in Sept. The differential remains below the 10yr average of \$838.

COVID-19 cases

Daily confirmed cases – Pacific Island countries

Daily new confirmed COVID-19 cases per million people
7-day rolling average. Due to limited testing, the number of confirmed cases is lower than the true number of infections.



Source: Johns Hopkins University CSSE COVID-19 Data

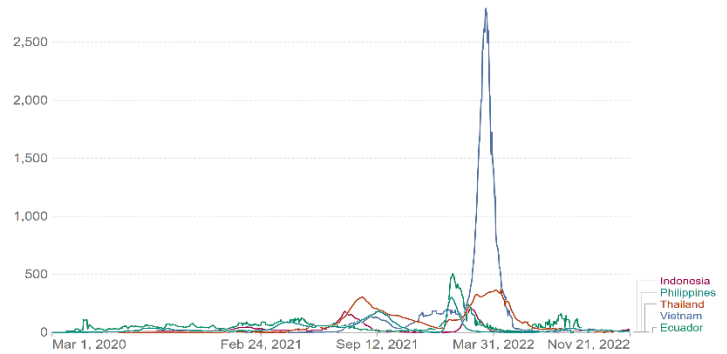
CC BY

<https://ourworldindata.org/covid-cases>

- Short, very sharp waves of community transmission in several PNA countries experienced in the latter half of 2022 continued in November, with Tuvalu the latest country to experience widespread community transmission. New daily case numbers have fallen rapidly in each case.

Daily confirmed cases – Processing countries

Daily new confirmed COVID-19 cases per million people
7-day rolling average. Due to limited testing, the number of confirmed cases is lower than the true number of infections.



Source: Johns Hopkins University CSSE COVID-19 Data

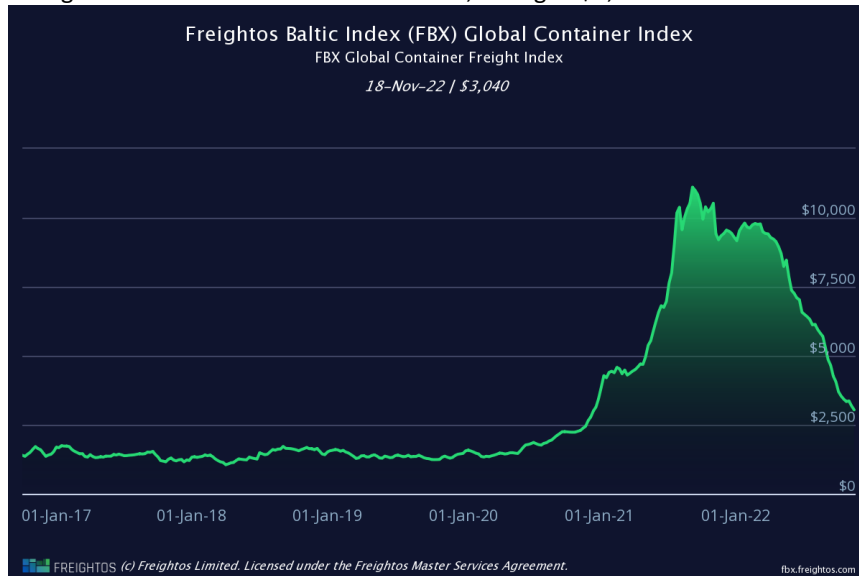
CC BY

<https://ourworldindata.org/covid-cases>

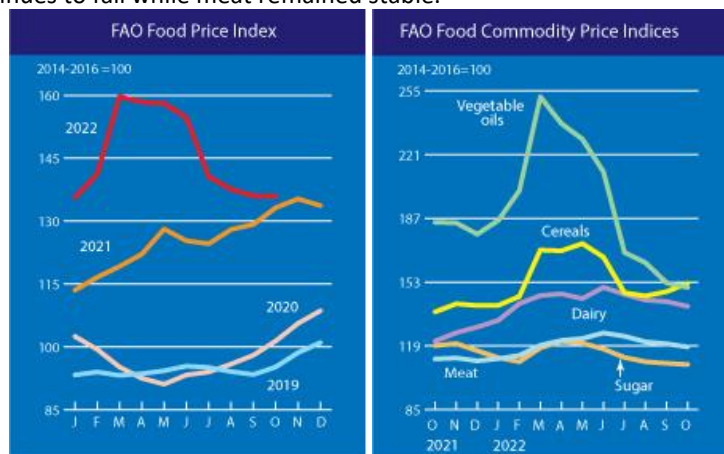
- New daily case numbers across all main processing countries are now at low levels relative to population size.

Other issues:

- Amongst the PNA Parties, all (except Tokelau) have now experienced high levels of COVID community transmission at some point throughout the pandemic. While the major wave of cases experienced by many PNA Parties have now subsided to low levels, Tuvalu experienced it's first major wave of community transmission in November. The Solomon Islands is also reporting an uptick in new casis in recent weeks¹.
- SPC report that rates of vaccination in the Pacific are generally very high, with each of NR, PW, TV, TK and KI achieving >90% double dose vaccination rates amongst PNA Parties². Vaccination rates in PNG remain very low.
- The FBX global container freight index continued to fall in October, sitting at \$3,040 for a 40ft container as at 23rd November³.



- The FAO Food Price Index stabilised in October, but remains at historically high levels⁴. Amongst the other food commodities, the price of vegetable oils continues to fall while meat remained stable.



- Atuna report that a combination of uncertainty around the market situation and buyers holding off orders to see what volumes come in from the WCPO following the FAD closure have kept the Bangkok SKJ price stable in recent weeks⁵.

Notes:

- Data on catch, effort, catch rates and transshipment is based on electronic reporting through iFIMS as at 22nd November, 2022. Some data may change as more information is added over time. Figures for October 2022 should be considered preliminary.
- The EEZs+HS effort figures in the fishing effort graph do not include a VDS vessel size adjustment factor. The actual VDS usage figures are adjusted for vessel size. HS days may include some non-fishing time. HS effort figures are those for the eastern high seas and HSPs 4 and 5.
- A dashed-red line has been on many graphs at February 2020 to provide an indication of the time in which COVID-related restrictions were becoming more common globally and regionally.

¹ <https://www.spc.int/updates/blog/2022/10/covid-19-pacific-community-updates#CurrentStatus>
² <https://www.spc.int/updates/blog/2022/06/covid-19-pacific-community-updates#CurrentStatus>
³ <https://fbx.freightos.com/>
⁴ <https://www.fao.org/worldfoodsituation/foodpricesindex/en/>
⁵ <https://atuna.com/news/bangkok-skipjack-price-waits-for-what-is-to-come>